

小麦 TaXI-IV 互作蛋白的筛选及其与 TaHRLI-4D 的互作分析

刘洋¹ 白裔凡¹ 陈微¹ 周晶晶¹ 蔡华^{1*} 司红起^{2*}

(1. 滁州学院生物与食品工程学院, 滁州 239000; 2. 安徽农业大学农学院, 合肥 230000)

Screening for TaXI-IV Interacting Proteins in Wheat and Analysis of Its Interaction with TaHRLI-4D

DOI: 10.13560/j.cnki.biotech.bull.1985.2025-0993

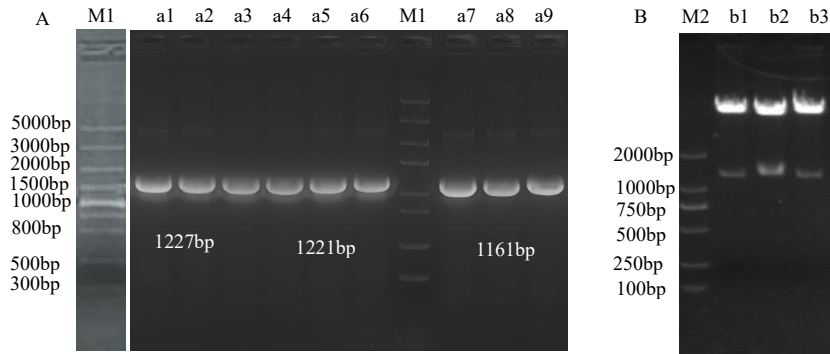
附表 1 试验所用的引物列表

Appendix 1 List of primers used in the experiment

| 引物名称 Primer name | 引物序列 Primer sequence (5'-3') | 用途 Usage |
|--------------------|--|---|
| pH2M27-TaxiIV-F | <u>AGAGGACACGCTCGAGATGGCACGAGTCTCCTCCTC</u> | 亚细胞定位 Subcellular localization |
| pH2M27-TaxiIV-R | <u>CCATGAGCTCCCTAGGGGTGCTTCCAGCGAAATTGAAG</u> | |
| pBT3N-TaxiIVF | <u>ATTCTGCAGGGCCATTACGGCCATGGCACGAGTCTCCTCCTC</u> T | |
| pBT3N-TaxiIVR | <u>TAGCTACTTACCATGGCTAGGTGCTTCCAGCGAAATT</u> | |
| pBT3STE-TaxiIVF | <u>TTTATGTAATGGCCATTACGGCCGACGAGTCTCCTCCTCGT</u> | 酵母双杂交 Yeast two-hybrid |
| pBT3STE-TaxiIVR | <u>TATCGAATTCCTGCAGGGGGTGCTTCCAGCGAAATTGAAG</u> | |
| pBT3SUC-TaxiIVF | <u>TATCTGCAATGGCCCTCCGGTGCTCGCTCCGGT</u> | |
| pBT3SUC-TaxiIVR | <u>TATCGAATTCCTGCAGGGGGTGCTTCCAGCGAAATTGAAG</u> | |
| TaxiIV-nLUC-F | <u>TCCGTACCCGGGATCCATGGCACGAGTCTCCTCCTC</u> | |
| TaxiIV-nLUC-R | <u>TCTGGTCGACACTAGTGGTGCTTCCAGCGAAATTGAAG</u> | 荧光素酶互补实验 Luciferase complementation assay |
| HRLI4D-cLUC-F | <u>TGGCGGAGGTCAGATCATGGGGTTCGTGTCCTTCG</u> | |
| HRLI4D-cLUC-R | <u>GGACGCGTACGAGATCTCAGGTTGCTTGGACTTGGGGG</u> | |
| TaxiIV-YNE-F | <u>CACGGGGGACTCTAGAATGGCACGAGTCTCCTCCTC</u> | |
| TaxiIV-YNE-R | <u>GAGCGGTACCCTCGAGGGTGCTTCCAGCGAAATTGAAG</u> | 双分子荧光互补实验 Bimolecular fluorescence complementation assay |
| HRLI4D-YCE-F | <u>CACGGGGGACTCTAGAATGGGGTTCGTGTCCTTCG</u> | |
| HRLI4D-YCE-R | <u>GAGCGGTACCCTCGAGGGTGCTTCCAGCGAAATTGAAG</u> | |
| pH2M33-TaHRLI4D-F | <u>GGAGAGGACACCTAGGATGGGGTTCGTGTCCTTCG</u> | 构建转基因拟南芥 Construction of transgenic <i>Arabidopsis thaliana</i> |
| pH2Mp33-TaHRLI4D-R | <u>GACTCTAGGGACTAGTTCAGGTTGCTTGGACTTGGGGG</u> | 表达分析和转基因拟南芥鉴定 Expression analysis and identification of transgenic <i>Arabidopsis thaliana</i> |
| qTaHRLI-4D-F | TCTACCTTGCTTTCATCACACCG | |
| qTaHRLI-4D-R | CCCTCAAAAACGGATCCATTAC | |
| qTaActin-F | GTGAGCCACACTGTTCCAATCTATG | 表达分析 Expression analysis |
| qTaActin-R | CCACCGATCCAGACACTGTATTTTC | |
| AtActin-F | CCTTGAAGTATCCTATTGAGC | 转基因拟南芥鉴定 Identification of transgenic <i>Arabidopsis thaliana</i> |
| AtActin-R | GGTCTTTGAGGTTTCCATCT | |

注: 下划线处表示载体上的同源臂序列

Note: Underlined sequences refer to homology arms in the vector



M1: Trans5K DNA Marker; M2: Trans2K DNA Marker; a1–a3、a4–a6、a7–a9 分别为 pBT3N-*TaXI-IV*、pBT3STE-*TaXI-IV*、pBT3SUC-*TaXI-IV*菌液 PCR; b1–b3 分别为双酶切后的 pBT3N*TaXI-IV* (*Pst* I/*Sac* II,1259bp)、pBT3STE-*TaXI-IV* (*Xba* I/*Hind* III,1315bp)、pBT3SUC-*TaXI-IV* (*Xba* I/*Pst* I,1251bp)重组诱饵质粒

M1: Trans5K DNA Marker; M2: Trans2K DNA Marker; a1–a3, a4–a6, a7–a9: PCR products of bacterial suspensions from pBT3N-*TaXI-IV*, pBT3STE-*TaXI-IV*, and pBT3SUC-*TaXI-IV*, respectively. b1–b3: Double-digested recombinant bait plasmids pBT3N-*TaXI-IV* (*Pst* I/*Sac* II,1259bp), pBT3STE-*TaXI-IV* (*Xba* I/*Hind* III,1315bp), and pBT3SUC-*TaXI-IV* (*Xba* I/*Pst* I,1251bp)

附图 1 *TaXI-IV* 的 PCR 扩增 (A) 与重组诱饵载体双酶切检测 (B)

Attached Figure 1 PCR amplification products of *TaXI-IV* (A) and double restriction enzyme digestion verification of recombinant bait vectors (B)