

菊花 *CmNFYC4* 促进开花的功能研究

卢可新 殷梦茹 户倩 蒋甲福*

(南京农业大学园艺学院, 南京 211800)

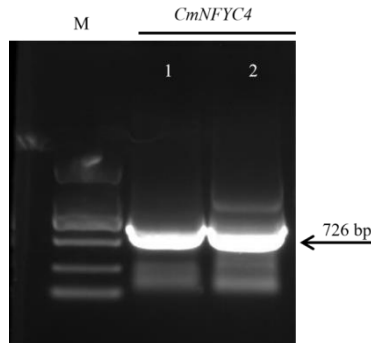
Functional Study of *CmNFYC4* in Promoting Flowering in *Chrysanthemum morifolium*

DOI: 10.13560/j.cnki.biotech.bull.1985.2026-0324

附表 1 引物信息

Table S1 Primer information

引物名称 Primer name	序列 Sequence (5'-3')	用途 Purpose
1300- <i>CmNFYC4</i> -F	ggtcgacatttaaactagt ATGGACAACAACACAACACC	载体构建 Vector construction
1300- <i>CmNFYC4</i> -R	gcccttgctcaccatggtagc AGTGACTTCTCCCTTTCTTC	载体构建 Vector construction
pGBKT7- <i>CmNFYC4</i> -F	gcatatggccatggaggccgaattc ATGGACAACAACACAACACC	载体构建 Vector construction
pGBKT7- <i>CmNFYC4</i> -R	gcggccgctgcaggtcgcaggtacc AGTGACTTCTCCCTTTCTTC	载体构建 Vector construction
<i>CmNFYC4</i> -qRT-F	TTGGGGGGATGGTAGGGTCT	荧光定量 RT-qPCR
<i>CmNFYC4</i> -qRT-R	ACTGCCGCCACTCCCAAATG	荧光定量 RT-qPCR
pSRDX- <i>CmNFYC4</i> -F	gcccacgttctcgag ATGGACAACAACACAACACC	载体构建 Vector construction
pSRDX- <i>CmNFYC4</i> -R	atccagatcgagtgagctcc AGTGACTTCTCCCTTTCTTC	载体构建 Vector construction
TRV2- <i>CmNFYC4</i> -F	gtcctaattccgttaccgaattc ATGGACAACAACACAACACC	载体构建 Vector construction
TRV2- <i>CmNFYC4</i> -R	TATGGGTACATTCTAGAGGATCC AGTGACTTCTCCCTTTCTTC	载体构建 Vector construction
35S-F	GACGCACAATCCCACTATCC	转基因鉴定 Transgenic identification
<i>EF1α</i> -F	TTTTGGTATCTGGTCCTGGAG	荧光定量 RT-qPCR
<i>EF1α</i> -R	CCATTC AAGCGACAGACTCA	荧光定量 RT-qPCR

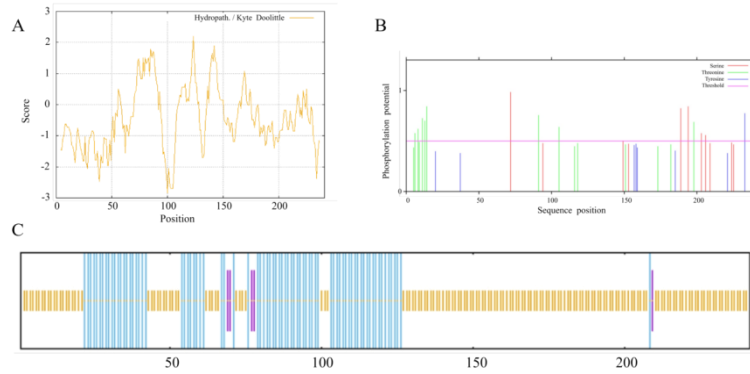


M: DL2000; 1,2: *CmNFYC4* 基因扩增产物

M: DL 2000. 1,2: Amplified product of *CmNFYC4*

附图 1 菊花‘神马’*CmNFYC4* 的克隆

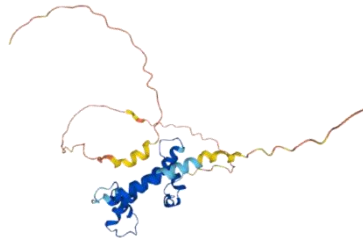
Fig. S1 Gene cloning of *CmNFYC4* from wild-type *Chrysanthemum morifolium* ‘Jinba’



A: CmNFYC4 蛋白的亲疏水性; B: CmNFYC4 蛋白二级结构预测; C: CmNFYC4 蛋白的潜在磷酸化位点
 A: Hydrophilicity and Hydrophobicity of the CmNFYC4 Protein. B: Secondary structure prediction of the CmNFYC4 protein. C: Potential phosphorylation sites of the CmNFYC4 protein

附图 2 CmNFYC4 蛋白结构分析

Fig. S2 Structure analysis of the CmNFYC4 protein



附图 3 CmNFYC4 蛋白蛋白三级结构预测

Fig. S3 Tertiary Structure Prediction of CmNFYC4 Protein